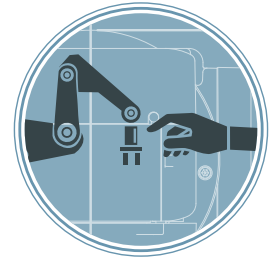




UNIVERSAL ROBOTS



Reduce Machine Tending Costs

Machine tending can be repetitive and uneventful. A collaborative robot can be used to tend machines and relieve employees of repetitive work – freeing their time to be used to add value to your business. With Universal Robots' fast and flexible deployment, you can quickly adapt production lines to handle a variety of parts or tasks.

Machine Tending Labor Costs

- \$40-\$50 per hour
- 1-3 shifts
- Operator down time
- Labor shortage
- Ergonomic concerns

Return on Investment: 1-6 Months

Universal Robot	\$25K - \$45K
Mobile Pedestal	\$500 - \$3,000
Grippers	\$400 - \$4,500
2D Vision *	\$2,000-\$5,000
3D Vision *	\$10K-\$30K

*If necessary. Not applicable to all Universal Robot deployments.



allied-automation.com
info@allied-automation.com

5220 E. 64th Street,
Indianapolis, IN 46220
941 Chestnut Hills Parkway
Fort Wayne, IN 46814

400 Missouri Ave Suite 102
Jeffersonville, IN 47130
219-D South Pioneer Boulevard
Springboro, Ohio 45066



Choose between three flexible and lightweight 6 axis robot arms

Our 3 Universal Robot arms are all highly flexible and lightweight 6-axis robot arms. Our 6 axis robot arms are designed to excel in a wide range of applications. The collaborative robots, or cobots, are categorized based on payload limits. The different models also have reach, weight and footprint differences.

	UR3e robot arm	UR5e robot arm	UR10e robot arm
Working radius	500 mm/19.7 ins	850 mm/33.5 ins	1300 mm/51.2 ins
Payload	3 kg/6.6 lbs	5 kg/11 lbs	10 kg/22 lbs
Weight	11.2kg/24.7 lbs	20.6kg/45.4 lbs	33.5kg/73.9 lbs
Footprint	128 mm/4.6 ins	149 mm/5.9 ins	190 mm/7.5 ins
Axis	6 axis	6 axis	6 axis



Maximize efficiency on your CNC Machine, increase quality, optimize production, and improve performance.

Improve speed while reducing the risk of injury associated with human operators working in close proximity to heavy machinery such as a CNC machine. If our robotic arm comes into contact with a person, our patented technology limits the forces at contact. UR robots can also be programmed to operate in reduced mode when a human enters the robot's work area and resume full speed when the person leaves. Universal Robots provides a future-proof platform for small businesses looking to optimize productions. If your work flow changes, the UR robot can be deployed quickly and easily in new constellations due to its small size and lightweight design.

» **Lower your operating costs.** Universal Robots gives you all the advantages of advanced CNC robotic automation, with none of the traditional added costs associated with robot programming, set-up, and dedicated, shielded work cells. The fastest registered ROI is a period of 34 days-one of the fastest in the robotics industry.

» **Universal Robots can be used in most CNC applications.** The space-saving CNC robot can also be reprogrammed quickly and used with different machines and peripheral systems such as vision guidance.

» **The deployment of the CNC robotic arm to tend CNC machines in new processes is fast and easy,** giving you the agility to automate almost any manual task, including those with small batches or fast change-overs. The robot is able to re-use programs for recurrent tasks.

» **Relieve workers from ergonomically unfavorable, repetitive work.** With robot arms from Universal Robots you can free up your work force in order to do more important, less tasks.

» **Improve speed and precision** as well as reliability and quality. CNC robot arms can withstand significant environmental impact and changes in temperature.

Call Allied Automation at 800-214-0322 to schedule a free on-site evaluation and robot demo.



Why companies are considering automating with cobots:

- **Increased quality and consistency**
- **Skill Shortage- high turnover rates**
- **Training costs**
- **Global competition**
- **Decline in offshoring/reshoring on the rise**
- **Logistics cost**



allied-automation.com
info@allied-automation.com

5220 E. 64th Street,
Indianapolis, IN 46220

941 Chestnut Hills Parkway
Fort Wayne, IN 46814

400 Missouri Ave Suite 102
Jeffersonville, IN 47130

219-D South Pioneer Boulevard
Springboro, Ohio 45066